

Seating

Heroe - Bespoke locally manufactured by our local artisans

Heroe features an inner 30000 rub contract fabric and an outer Kitenge cotton fabric. The seat is made of contract foam and the back is made of standard density foam. The interior framework features recycled wood and multi layer ply. Seat legs are made of hardwood with Walnut finish.



Chair Size (l x w x h)

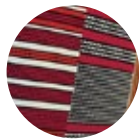
720 x 720 x 830

Seat height (h)

460



Available Color Fabric Options



*Refer to our fabric colour chart on page 68 for more options.

Technical Specifications



Fabric Colour Options For Bespoke Locally Manufactured Furniture



V01



V02



V03



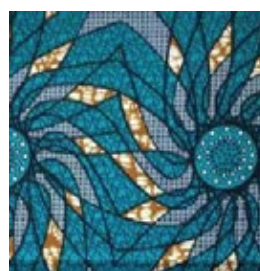
V04



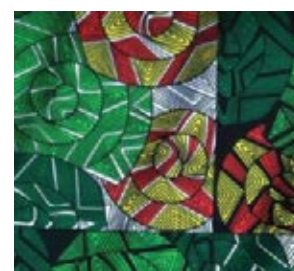
V07



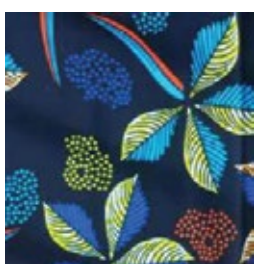
V08



V09



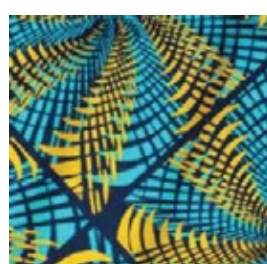
V10



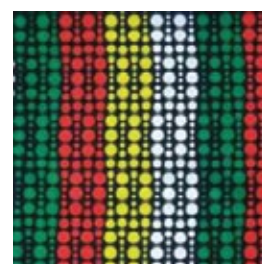
V05



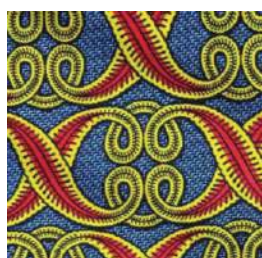
V06



V11



V12



V13



V14

**More
Fabric
Options
Available**



Furrtastic Workspaces



Sales

sales@antarc-ke.com

0733 503 500 | 0734 503 500

No 62, Muthithi Road, Westlands

www.antarc-ke.com



Antarc Workspaces

