

Breakout

Seating

Chui - Bespoke locally manufactured by our local artisans

Chui is a dining chair made from solid mvule with hand crafted, turned hardwood legs. It features a curved ergonomic back rest , contract 50 mm foam and contract fabric 40,000 rub. The chair is finished in Mid Walnut.



Chair Size (l x w x h)

550 x 550 x 795

Seat height (h)

550



Available Color Fabric Options



*Refer to our fabric colour chart on page 68 for more options.

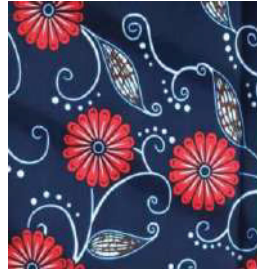
Technical Specifications



Fabric Colour Options For Bespoke Locally Manufactured Furniture



V01



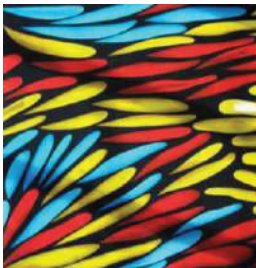
V02



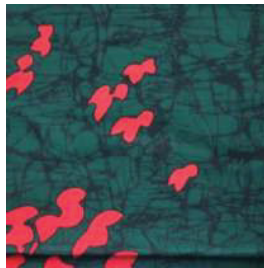
V03



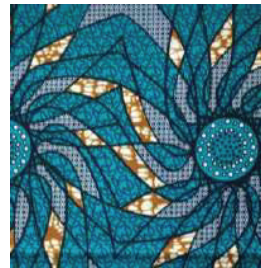
V04



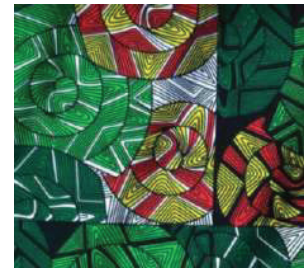
V07



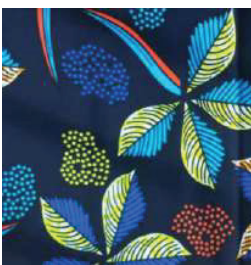
V08



V09



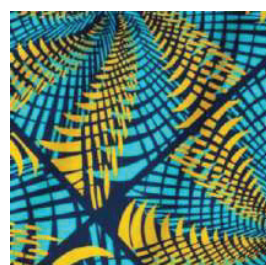
V10



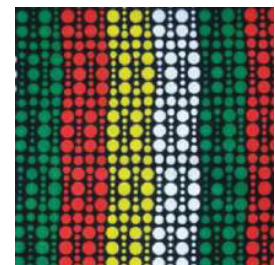
V05



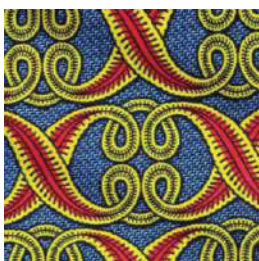
V06



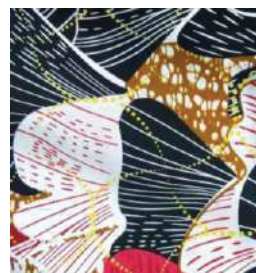
V11



V12



V13



V14

More
Fabric
Options
Available



Sales

sales@antarc-ke.com

0733 503 500 | 0734 503 500

No 62, Muthithi Road, Westlands

www.antarc-ke.com



Antarc Workspaces

