

Rover

Rover is the tool that will cross boundaries of “immobile” classrooms, enabling educators to provide a modern and effective arena for learning. Rover is designed to be mobile and adaptable in limited spaces and dense classrooms. A room can be transformed from theatre setting to a U-shaped setting effortlessly by moving the chairs around. This allows for maximum utilization of space as well as increasing interaction between student and teacher.

Standard Features

Chair Shell

Injection-molded polypropylene shell in white or grey (100% recyclable).

Seat Shell

Injection-molded polypropylene shell in choice of 3 colours (100% recyclable).

Tablet

Writing tablet uses an anti-panic mechanism and is tested to 50kg loads. Accommodates an open A4 book or 15” notebook computer. Recessions for a pen and cup

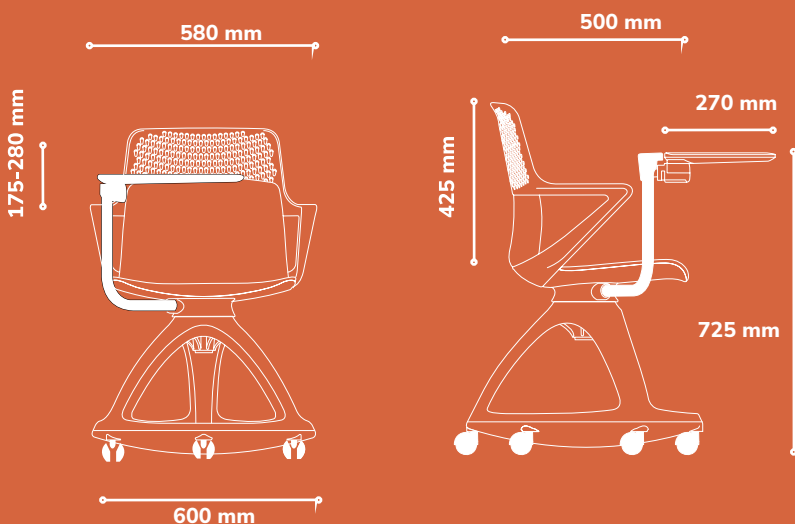
Base

AP Tri-pod Base 600 mm diameter storage base of grey molded polypropylene equipped with 50 mm dual-wheel castors.



OCSAMP030

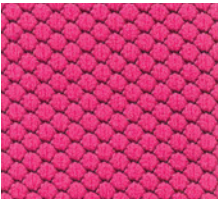
Technical Specifications



Fabric Colour Options For Chairs

Select a colour fabric that resonates with your workspace .

*Refer to our main material catalogue for the full range of options available .



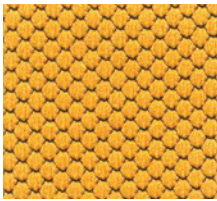
Magenta



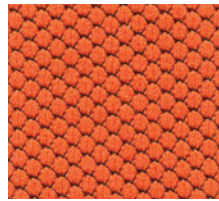
Deep Red



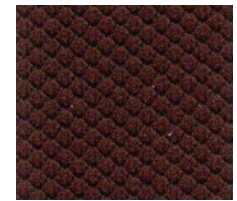
Burgundy



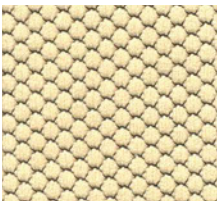
Honey



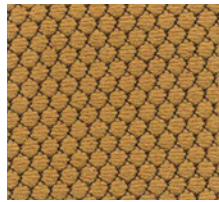
Mandarin



Cocoa



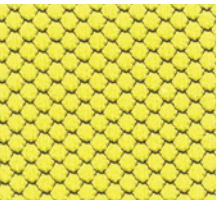
Buttercup



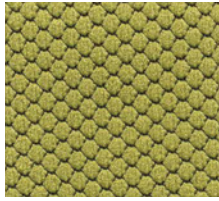
Khaki



Taupe



Mustard



Olive



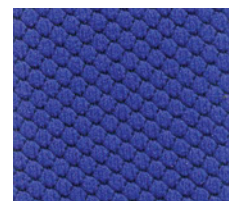
Navy Blue



Teal Blue



Steel Blue



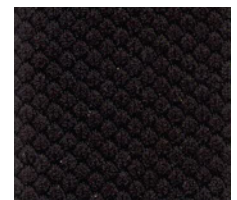
Royal Blue



Snowy



Slate Grey



Black



Sales

sales@antarc-ke.com

0733 503 500 | 0734 503 500

No 62, Muthithi Road, Westlands

www.antarc-ke.com



Antarc Workspaces

