

## Robin

Robin has a modern appearance that allow a consistent furnishing image while meeting budget requirements. A permeable mesh backrest makes a smart modern look and also functions to provide ventilation for optimal comfort. The integrated back and armrest design makes a sturdy, rigid yet lightweight structure.

### Standard Features

#### Backrest

Back frame, back caps, and seat shell of polypropylene (100% recyclable) in black color.

#### Back and Seat Upholstery

100% High Tenacity Polyester Mesh. This permeable mesh provides elastic support, yet allowing ventilation for optimal comfort. Seat upholstery in fabric, vinyl or leather on polyurethane foam (recyclable into carpet padding, wadding etc)

#### Mechanism

Featuring 10-position tilt locking and tilt tension by hand crank placed conveniently at seat side.



OCROBIN003



4 wheels



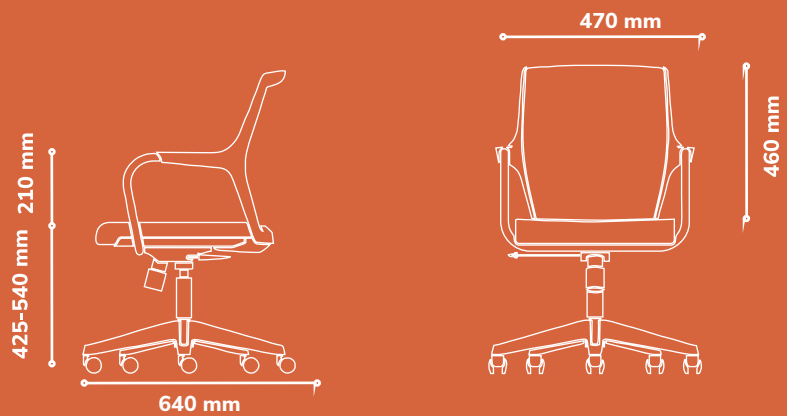
OCROBIN005

Visitor



OCROBIN001

## Technical Specifications



## Chair Adjustments



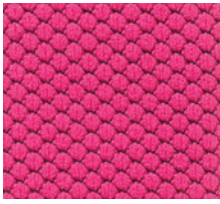
Height Adjustable Armrest



# Fabric Colour Options For Chairs

Select a colour fabric that resonates with your workspace .

\*Refer to our main material catalogue for the full range of options available .



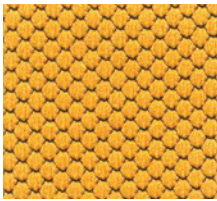
Magenta



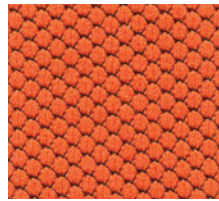
Deep Red



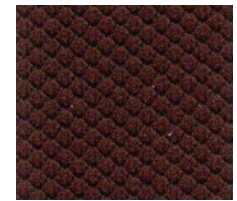
Burgundy



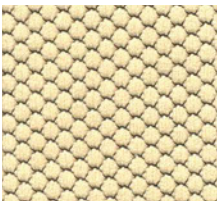
Honey



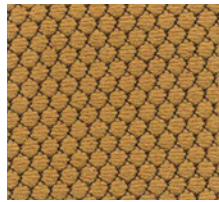
Mandarin



Cocoa



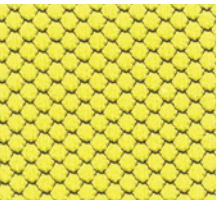
Buttercup



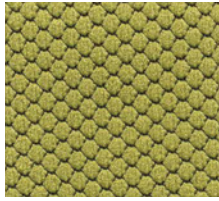
Khaki



Taupe



Mustard



Olive



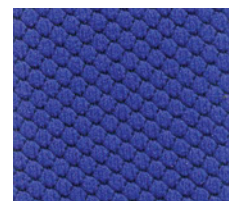
Navy Blue



Teal Blue



Steel Blue



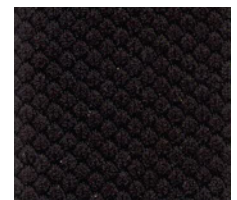
Royal Blue



Snowy



Slate Grey



Black



Sales

[sales@antarc-ke.com](mailto:sales@antarc-ke.com)

0733 503 500 | 0734 503 500

No 62, Muthithi Road, Westlands

[www.antarc-ke.com](http://www.antarc-ke.com)

---



Antarc Workspaces

