

Seating

Ergonomic Office Chair

Reya

High Back

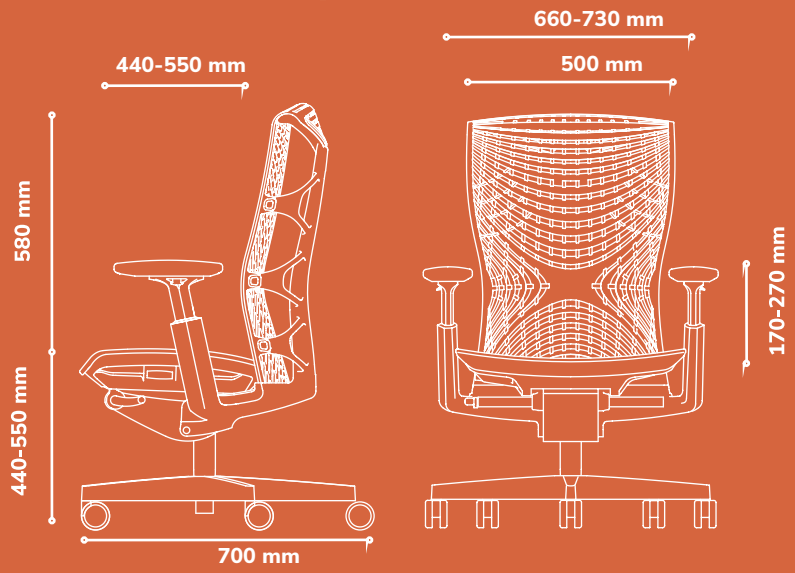


It is almost universal knowledge that sports equipment are designed with ergonomics in mind and to let you perform to your maximum potential. With an awesome design to make you look like you are on top of the game. We set out in this direction to make a chair that lets you extract maximum performance through improved ergonomics.





Standard Features

- Backrest**
Variable width webbing of flexible 100% recyclable thermoplastic elastomer (TPE) in black or grey colour.
- Armrest**
Soft touch arm pads are molded from polyurethane foam in black. Adjustable for 10 cm height
- Seat**
Soft seat webbing of 100% recyclable thermoplastic elastomer (TPE)
- Donati Mechanism**
Features 3-position tilt lock, pneumatic seat height, seat depth adjustment and auto weight-sensing tilt tension.

Technical Specifications



Chair Adjustments

- 
Width Adjustable Arm pad (1-way adjustable arm)
- 
Height Adjustable Armrest
- 
Synchronized Mechanism
- 
Seat Depth Adjustable



Fabric Colour Options For Chairs

Select a colour fabric that resonates with your workspace .

*Refer to our main material catalogue for the full range of options available .



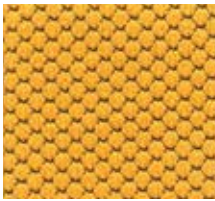
Magenta



Deep Red



Burgundy



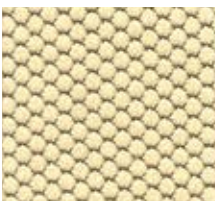
Honey



Mandarin



Cocoa



Buttercup



Khaki



Taupe



Mustard



Olive



Navy Blue



Teal Blue



Steel Blue



Royal Blue



Snowy



Slate Grey



Black



Furrtastic Workspaces



Sales

sales@antarc-ke.com

0733 503 500 | 0734 503 500

No 62, Muthithi Road, Westlands

www.antarc-ke.com



Antarc Workspaces

