

# Seating

# Multipurpose Chair



## Kifaru

Kifaru is a 4 legged steel frame Chair with Fabric seat with a propylene molded back



DCO037

### Standard Features

- Back Padding**  
Upholstered over polyurethane cut foam.
- Seat Padding**  
Upholstered over polyurethane cut foam.

**Main Shell**  
Injection molded shell in white or charcoal (100% recyclable). Stackable.

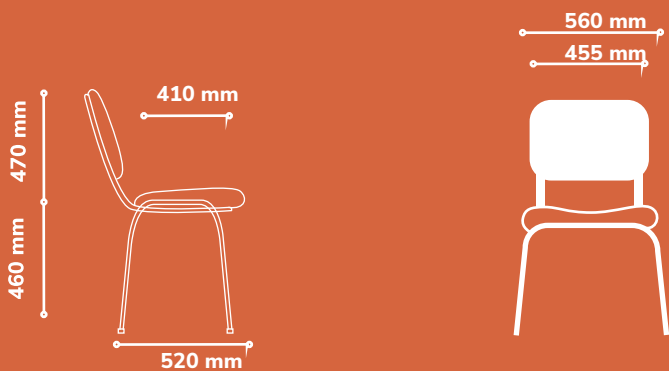


Navy Blue



DCO037

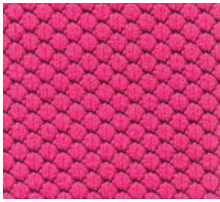
## Technical Specifications



# Fabric Colour Options For Chairs

Select a colour fabric that resonates with your workspace .

\*Refer to our main material catalogue for the full range of options available .



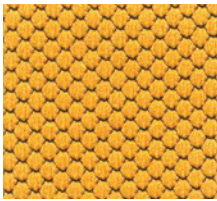
Magenta



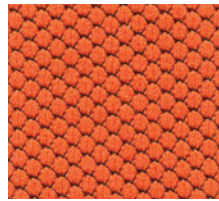
Deep Red



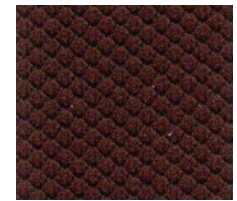
Burgundy



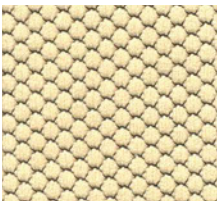
Honey



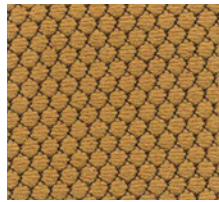
Mandarin



Cocoa



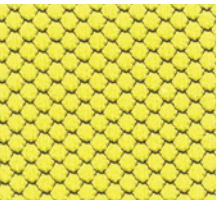
Buttercup



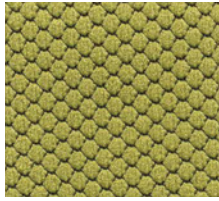
Khaki



Taupe



Mustard



Olive



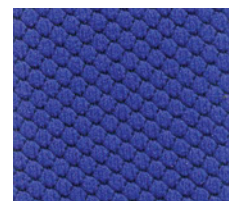
Navy Blue



Teal Blue



Steel Blue



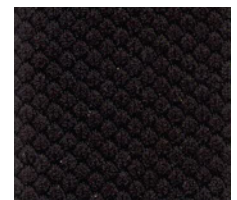
Royal Blue



Snowy



Slate Grey



Black



Sales

[sales@antarc-ke.com](mailto:sales@antarc-ke.com)

0733 503 500 | 0734 503 500

No 62, Muthithi Road, Westlands

[www.antarc-ke.com](http://www.antarc-ke.com)

---



Antarc Workspaces

