

## Esie

The Esie chair allows you to mix and match different components to meet various office seating requirements. The Esie mesh chair adjusts to people easily and equitably. With its clean and slender look, it has an understated elegance that sets it apart as a true original.



OCESIE001

### Standard Features

- Backrest**  
Height-adjustable lumbar support. Spinal joints of thermoplastic elastomer in grey colour.
- Armrest**  
Fixed armrest.
- Seat**  
Molded foam with polypropylene (100% recyclable) shell in black colour.
- Mechanism**  
Basic Swivel-tilt chair employ a Spring-Head mechanism with 2-position Tilt Lock and pneumatic seat height control.

Visitor



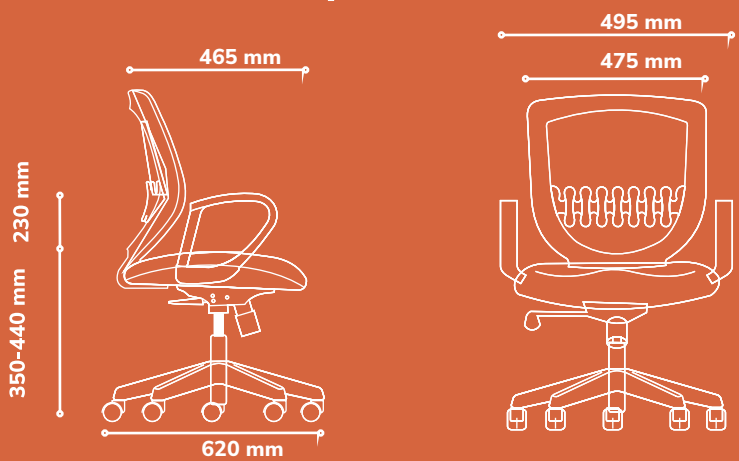
OCESIE002

Drafting



OCESIE004

### Technical Specifications



### Chair Adjustments



Spring Head Mechanism



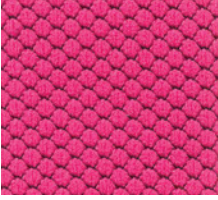
Seat Height Adjustable



# Fabric Colour Options For Chairs

Select a colour fabric that resonates with your workspace .

\*Refer to our main material catalogue for the full range of options available .



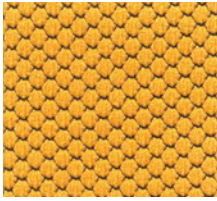
Magenta



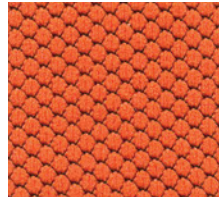
Deep Red



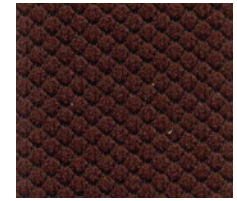
Burgundy



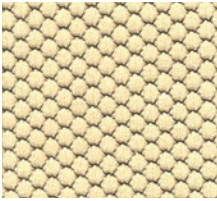
Honey



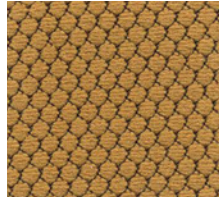
Mandarin



Cocoa



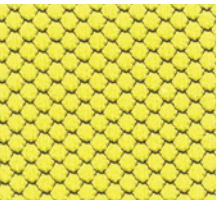
Buttercup



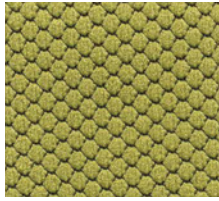
Khaki



Taupe



Mustard



Olive



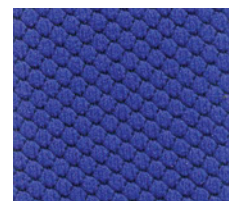
Navy Blue



Teal Blue



Steel Blue



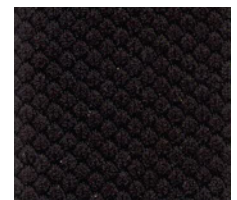
Royal Blue



Snowy



Slate Grey



Black



Sales

[sales@antarc-ke.com](mailto:sales@antarc-ke.com)

0733 503 500 | 0734 503 500

No 62, Muthithi Road, Westlands

[www.antarc-ke.com](http://www.antarc-ke.com)

---



Antarc Workspaces

