

# Seating

# Ergonomic Office Chair



High Back



OCFULKRUM001



## Fulkrum

Ergonomics considerations namely, a ventilating mesh back, a fine-adjustable lumbar pad, and a synchronized mechanism enables its user to work comfortably and efficiently from the desk over longer periods. The user becomes the center of workflow and information movement.

### Standard Features

- Headrest**  
Adjustable headrest with cushion.
- Breathable Mesh Backrest**  
Allows improved ventilation and transpirations, to provide exceptional thermal comfort.
- Lumbar Pad**  
Can be conveniently adjusted via side knobs, to customize the exact support for various spinal shapes.
- Tilt Tension Control**  
To obtain a balanced reclining resistance.
- Synchronized Tilt Mechanism**  
For the most natural motion to vary the human posture during prolonged seated periods.
- Multi-position Tilt Lock**  
Allows the back to be engaged to the preferred recline angle.

Medium Back



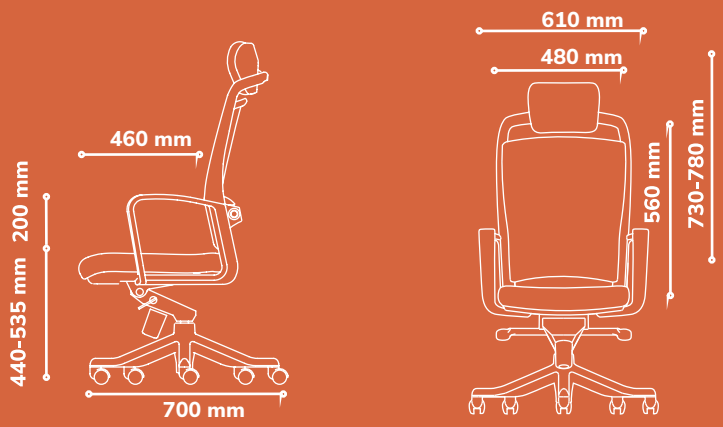
OCFULKRUM002

Visitor

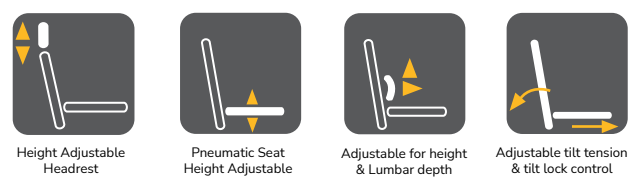


OCFULKRUM003

## Technical Specifications



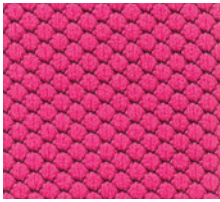
## Chair Adjustments



# Fabric Colour Options For Chairs

Select a colour fabric that resonates with your workspace .

\*Refer to our main material catalogue for the full range of options available .



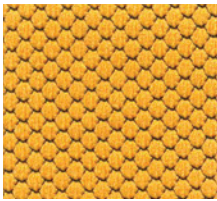
Magenta



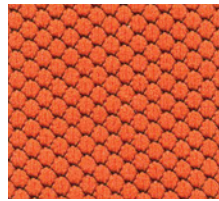
Deep Red



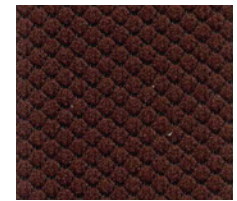
Burgundy



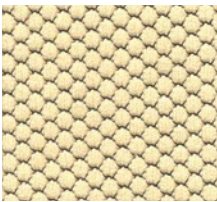
Honey



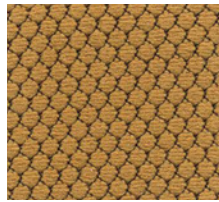
Mandarin



Cocoa



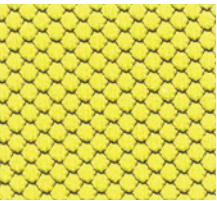
Buttercup



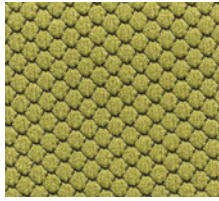
Khaki



Taupe



Mustard



Olive



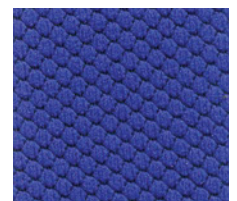
Navy Blue



Teal Blue



Steel Blue



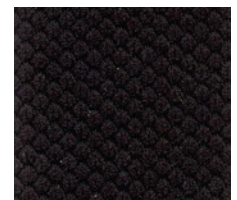
Royal Blue



Snowy



Slate Grey



Black



Sales

[sales@antarc-ke.com](mailto:sales@antarc-ke.com)

0733 503 500 | 0734 503 500

No 62, Muthithi Road, Westlands

[www.antarc-ke.com](http://www.antarc-ke.com)

---



Antarc Workspaces

