



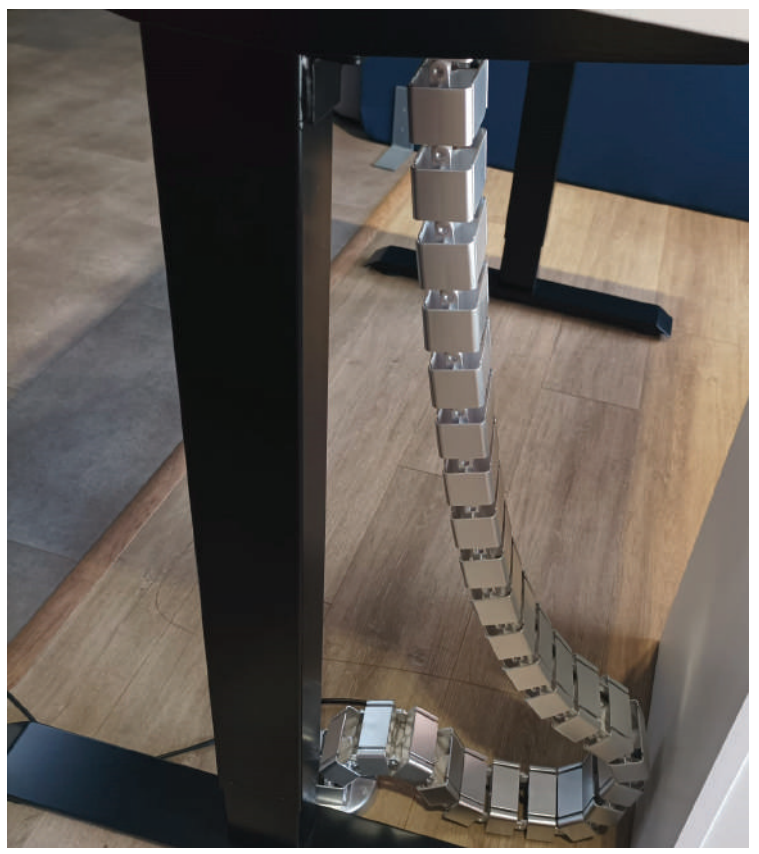
## ERG21

Height adjustable with Height Range 710-1210mm  
Load Capacity 70kg with Two button up/down switch.  
Frame(black).

### Leg Colour Options



ERG21 with one motor and a black frame



Vertebrae cable management chain from the floor.



Up/Down arrows for controlling the table heights

## Choose your table top colour

IN STOCK

White top

AVAILABLE ON SPECIAL ORDER min qty 10



African Wenge



Espresso



Haven



Napoca



Treviso



Vardo



Congo



Folkstone Grey



Arden



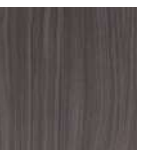
Brookhill



Normandy



Storm Grey



Maiden Wood



Harvard Cherry